

MAIA  
12<sup>TH</sup> APRIL

PORTUGAL  
KARATE  
OPEN

ACTIVE  
HEALTH  
COMPETITION  
EDUCATION  
COMMUNITY  
FAIR-PLAY

we feel 

MAIA  
EUROPEAN  
CITY OF SPORT  
2014

INFANT, INITIATE  
JUVENILE, CADET  
JUNIOR, SENIOR  
KATA AND KUMITE  
PRIZE MONEY



ORGANIZATION



SUPPORT



KNOW MORE:

[WWW.CKMAIA.ORG](http://WWW.CKMAIA.ORG)

MAIA INTERNATIONAL KARATE OPEN 2014  
Pavilhão Municipal do Corim - Aguas Santas

**CK MAIA TECHNICAL DIRECTOR**

Dear Friends,

The holding of the sports event “Maia Open” for the 14<sup>th</sup> consecutive year has been for me a particular cause of pride.

This has been one of the largest and most prestigious karate tournaments, both nationally and internationally, since the beginning.

The responsibility of CKM is large and has grown from year to year, whereas both the public and the participants in the tournament have expressed their appreciation for the organization of this event, waiting anxiously for the subsequent year’s tournament.

It is for us essential to innovate and create harmony between what we want to achieve and the specific interests of each participant. Our aim is always the welfare of the individuals and the groups.

Assuming this motto as our banner, our mission is to contribute to the promotion and the organization of this unique moment of celebration and socialization, along with the practice of karate at the highest level.

In competition will be the best national athletes of all ages, as well as world renowned illustrious competitors.

We believe that the commitment and professionalism with which we plan to organize the tournament will certainly raise your presence.

Yours friendly,

António Moreira



## WELCOME TO MAIA

Maia is a Portuguese city situated on the North of the country, in the Oporto District. It has about 35 625 inhabitants. The city has an area of 83.14 km<sup>2</sup> and had 140 859 inhabitants in 2008. Presently, it is divided into 17 sub regions. Maia is in the centre of other major cities: on the north, the cities of Trofa and Santo Tirso; on the east, the city of Valongo; southeast, Gondomar; south, Oporto; southwest, Matosinhos; and northwest, Vila do Conde.

## HISTORY

The area where the city is presently placed is inhabited for thousands of years, and there were found traces dating from the Paleolithic period. In some of the region's hills traces of people from the Iron Age were found. Attracted by the wealthy soils and the abundance of the resources, Romans also left here visible marks of their occupation.

In the mid-thirteenth century, this area extended from the city of Oporto up to the Ave and from the sea to the mountains. In 1304, however, these lands were integrated in Oporto, losing the political and administrative autonomy. In 1360, the first grantees were established in the region and in this year, King Peter I gave the landlord of Azurara, with the lands of Maia, to the Prince Dinis, his son.

The history of this county is also closely linked to the founding of the nation. Some authors argue that even the Prince Afonso Henriques was educated here, next to the family of Mendes da Maia, to whom the Archbishop of Braga, D. Paio Mendes, and the famous warrior Gonçalo Mendes da Maia, the "Lidador", so named for having entered into constant fearless fights against Saracens, belonged.

In the fifteen century, during the Discoveries period, from Maia departed most of the sails that equipped the Portuguese caravels, woven with Maia's raw materials.

In the early sixteenth century, King Manuel I granted the charter, which established the rents and grounds to be paid to the grantees of Maia's lands, as well as how to carry out common punishments and justices.

Between the years 1700 and 1836, the county was composed of 44 parishes and encompassed the entire sea range between the Leça and the Ave. With the administrative reforms initiated in 1836, it became a separate municipality, but reduced in area and number of parishes. In 1857 it was, even, extinct and it was necessary to wait until 1868 to have it restored.

In 1809, Napoleon's army of the Duke of Dalmatia, Marshal Soult, crossed Maia in its way to Oporto. In the turbulent years of liberal fights, between 1832 and 1834, it was the stage of bloody struggles between absolutists and liberals.

After the proclamation of the Republic in 1910, Maia (considered a village in the year 1902) had, for some time, as administrator, the philosopher Leonardo Coimbra.

On the 23th August, 1986, Maia was finally given the status of city.

MAIA INTERNATIONAL KARATE OPEN 2014  
Pavilhão Municipal do Corim - Aguas Santas

ÁGUAS SANTAS

Águas Santas is a parish in the municipality of Maia, with 7.86 km<sup>2</sup> and approximately 29,000 inhabitants (2006). Density: 3 212.3 inhabitants per km<sup>2</sup>. The parish is limited on the northwest side by the parish of Milheirós, on the north by the parish of Nogueira, south by Pedrouços, and it is crossed by the river Leça.

It is one of the most densely populated villages in the area of Entre Douro e Minho, and has the infrastructures to receive the city status in a near future.

Currently it remains the most populous village in the district of Oporto and of Northern Portugal.



MAIA INTERNATIONAL KARATE OPEN 2014  
Pavilhão Municipal do Corim - Aguas Santas

**GENERAL INFORMATION**

**>Language:**

The Oficial Language is Portuguese. Most of people speak English



**>Currency:**

The Portuguese currency is Euro.

The Banks are generally open from 9am to 3 pm, from Monday to Friday



**>Weather:**

The average temperature in April is 16°C.



**>Time:**

Portugal is in the Central European Time Zone – GMT + 0 hour



**>Electricity:**

The Voltage in Portugal is 220V. Portugal use Standard Continental European “europlug”, with two round pins.



**>Telephone:**

For any reason if you need to call to Portugal, please dial 00351. The GSM mobile system is available. Please Check compatibility with your operator.



**>Emergency Calls:**

SOS: 112

Informations: 118

Fire Departement: 117

Nearest Hospital:

**Hospital de S.João**

Alameda Professor Hernâni Monteiro

4202-451 Paranhos

Telef. 225512100

MAIA INTERNATIONAL KARATE OPEN 2014  
Pavilhão Municipal do Corim - Aguas Santas

## VISA REQUIREMENTS

Citizens of EU and EEA: Andorra, Austria, Belgium, Bulgaria, Croatia, Cyprus, Czech Republic, Denmark, Estonia, Finland, France, Germany, Greece, Hungary, Ireland, Italy, Latvia, Liechtenstein, Lithuania, Luxembourg, Malta, Montenegro, Netherlands, Norway, Poland, Romania, Serbia, Slovakia, Slovenia, Spain, Sweden, Switzerland, United Kingdom **are free to enter Portugal**. The required travel document for entry is a national ID Card or Passport.

**All the others countries require visa even for a period of less than 90 days.**

In Case of Problem you can Contact to CKMaia:

**Information contacts:**

Clube de Karate da Maia  
Address: Avenida Lidador da Maia, edif. Finanças 2º Sala8  
4425 Aguas Santas - Maia Portugal  
email: [cesar.silva@ckmaia.org](mailto:cesar.silva@ckmaia.org) [nuno.moreira@ckmaia.org](mailto:nuno.moreira@ckmaia.org)  
Tel. +351 918207888 Tel. +351 962689300

## ENTRANCE TICKETS FOR THE PUBLIC

All persons that want to assist the Tournament have to pay 1€ per day.

Only Judges, athletes and coaches pass without pay.

## TRANSPORTATION

Regular Transfer upon arrival and departure from the Oporto airport will be organized for the clubs. The participating Countries or clubs have to request this service in advance. The costs for transportation will be 15€ (Both ways – for person) or 10€ (both ways – for person – in a group with 5 or more athletes)

MAIA INTERNATIONAL KARATE OPEN 2014  
Pavilhão Municipal do Corim - Aguas Santas

## PUBLIC TRAFIC

Maia and Oporto has a modern public transport network which branches out far and wide: buses, ferries, taxis, metro, and Good international rail.

## OPORTO AIRPORT

Oporto International airport is about 20 minutes from the sports hall (Águas Santas) by car or Taxi.



## CATEGORIES

Kata	Kumite	Kumite
[M/F] até 9		16-17 F -54Kg / +54Kg
[M/F] 10-11	12-13 F -50Kg / +50Kg	16-17 M -65Kg / +65Kg
[M/F] 12-13	12-13 M -55Kg / +55Kg	+18 F -60kg / +60Kg
[M/F] 14-15	14-15 F -54Kg / +54Kg	+18 M -78Kg /+78Kg
[M/F] +16	14-15 M -60Kg / +60Kg	

All categories have male (M) and female (F).

MAIA INTERNATIONAL KARATE OPEN 2014  
Pavilhão Municipal do Corim - Aguas Santas

The rules are those of WKF/FNK-P.

Please contact organization if any doubt.

## TOURNAMENT INSCRIPTION

Countries or clubs have to do the inscription in the web site [www.sportdata.org](http://www.sportdata.org) . More information in [www.ckmaia.org](http://www.ckmaia.org) the sub page Maia International Open.

All the athletes and coach have to pay an inscription.

	Up to 9 / 10-11	12-13 / 14-15	+16 years	Coach
<b>Prices</b>	5€	10€	15€	2€

International Payments can be made at the tournament registration desk.

## IMPORTANT DATES

5 March – Website available

[https://www.sportdata.org/karate/set-online/veranstaltung\\_info\\_main.php?vernr=1476](https://www.sportdata.org/karate/set-online/veranstaltung_info_main.php?vernr=1476)

1 April – Registration deadline

2 April – Published all valid registrations

4 April – Deadline for complaints on registration

5 April – Draws

Draws published on website

Detailed Schedule published

6 April – Deadline on complaints on the draws

6 April – Published final draws



MAIA INTERNATIONAL KARATE OPEN 2014  
Pavilhão Municipal do Corim - Aguas Santas

## MEALS AT THE STADIUM

Lunches for all interested will be served in the school, next to stadium.

Can buy the tickets in the entrance of stadium

Meals are going to be served on Saturday at lunch and dinner.



## REFEREES

All referees must contact the organization. The Organization reserved hotel and meals to all judges.

## REGISTRATION OF DELEGATIONS

The Coach's must do the registration/ accreditation on Saturday morning, or at Friday in stadium at 10pm to 12pm .

The stadium is Open at 8 a.m. to 12 p.m. on Saturday

## AWARDS

The awards for the tournaments are for participating medals and certificated. For the medallist are prize money for the winner of each category, trophies for the 1<sup>st</sup>, 2<sup>nd</sup> and 3<sup>rd</sup> place, and big medals for the 5<sup>th</sup> place.

MAIA INTERNATIONAL KARATE OPEN 2014  
Pavilhão Municipal do Corim - Aguas Santas

## CHAMPIONSHIP STADIUM

Since the very beginning, The Karate Club of Maia has chosen the Pavilhão Municipal do Corim, because is on this city that the largest group of karate is situated. Was in 2000 that CKMaia begin the organization the first edition of the commemorations of the 25<sup>th</sup> of April. Some years later the name changes for the high level and numbers of participations. Now this championship is the most participated tournament in Portugal, with 1200 inscription last year.

The Capacity of Stadium is about 2000 spectators. It is situated in Aguas Santas a small Village of Maia. The Stadium is placed a 15 Kilometers of center and a 20 Kilometers to the famous Oporto City.

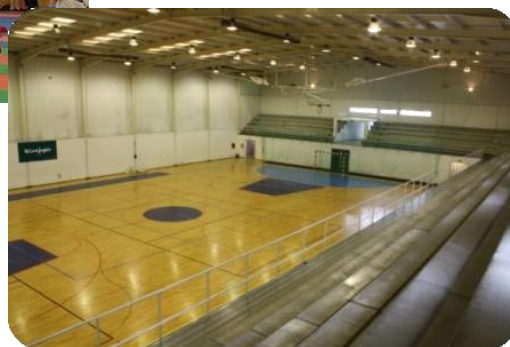
Stadium Adress:

**Pavilhão Municipal do Corim**

Rua Nova do Corim

4425 Aguas Santas Maia

Telef. 229780670



MAIA INTERNATIONAL KARATE OPEN 2014  
Pavilhão Municipal do Corim - Aguas Santas

## ACOMODATION

Down you can check a list of hotels, you can see also by [www.booking.com](http://www.booking.com)

### Park Hotel Porto Valongo

**Rua Regedor José Diogo 90, 4440-653 Valongo**



Localizado a 12 minutos do centro da cidade do Porto e a 2 km da Estação Ferroviária de Valongo, o Park Hotel Porto oferece estacionamento gratuito no interior e exterior. Dispõe de quartos espaçosos com televisão de ecrã plano por cabo e salas de conferências. Os modernos quartos climatizados do Park Hotel são acessíveis por elevador e incluem uma secretária e uma casa de banho privativa. O Aeroporto Francisco Sá Carneiro fica a 15 km e autocarros regulares para o centro do Porto partem perto do hotel. Telefone: 22 012 52 00

Tipo de Quarto	peçoas	Preço
<a href="#">Quarto Duplo</a>	2	€ 30

### Park Hotel Porto Aeroporto

**Avenida do Aeroporto nº241, 4470-558 Moreira**



O Park Hotel Porto Aeroporto está localizado a cerca de 3 minutos a pé do Aeroporto Internacional Francisco Sá Carneiro, no Porto. Dispõe de quartos insonorizados com acesso Wi-Fi gratuito e de uma recepção 24 horas. Todos os quartos do Hotel Porto Aeroporto são climatizados, estão decorados em tons acolhedores e incluem uma televisão de ecrã plano com canais por cabo e uma casa de banho espaçosa. O Park Hotel Porto Aeroporto fica aproximadamente a 2 minutos a pé de 2 estações de metro, Potoca e Aeroporto, proporcionando o fácil acesso ao centro da cidade. Telefone: 22 940 13 00

Tipo de Quarto	peçoas	Preço
<a href="#">Quarto Duplo</a>	2	€ 48

### **Hotel Premium Aeroporto**

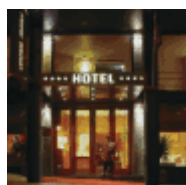


**Rua Simão Bolívar, 375, 4470 Maia**

O Hotel Maia Egatur oferece óptimas condições para os clientes, internet grátis e TV-Cabo nos quartos, e parque Grátis para o seu automóvel.

Phone: 229435650

Tipo de Quarto	Pessoas	Preço
Quarto Duplo	2	€ 48



### **Hotel Central Parque**

**Av.ª Visconde de Barreiros, 83, 4470 Maia**

O Hotel Central Parque está localizado mesmo no centro da Maia, apenas a poucos

**MAIA INTERNATIONAL KARATE OPEN 2014**  
**Pavilhão Municipal do Corim - Aguas Santas**

quilómetros da cidade do porto. Este hotel garante a todos os clientes uma excelente estadia nas terras no Lidador.

Telefone: 229475563

Tipo de Quarto	Pessoas	Preço
<a href="#">Quarto Duplo</a>	2	<b>€ 48</b>



### Hotel Portas da Santa Rita

Avenida Engenheiro Duarte Pacheco 2185, 4445 Ermesinde

Este Hotel com design de 4 Estrelas, Oferece parque automóvel grátis, boa relação em qualidade e preço. Este Hotel fica mesmo ao lado da Saída da A4 Ermesinde

Telefone: 229774800

Tipo de Quarto	Pessoas	Preço
<a href="#">Quarto Duplo</a>	2	<b>€ 38</b>



### Residencial Dona Teresa

Estrada Nacional 107, N.º 745 4425-138 Águas Santas – Maia

Telefone: 229736103 /229736104

Tipo de Quarto	Pessoas	Preço
<a href="#">Quarto Duplo</a>	2	<b>€ 35</b>
Quarto Individual	1	<b>€ 30</b>



### Residencial Abê

Rua Rodrigues de Freitas, N.º 1572 4445-636 Ermesinde

Telefone: 229735571

Tipo de Quarto	Pessoas	Preço
Quarto Triplo	3	<b>€ 40</b>
Quarto Duplo	2	<b>€ 30</b>
Quarto Individual	1	<b>€ 25</b>