

22-23 February 2014

Memorial Claude Sittiger

6th Swiss Karate Open

Saturday : Senior-Junior-U21-Cadet

Sunday : Kids

**Sportanlage Wallisellen
Alte Winterthurstrasse 62
8304 Wallisellen / Zuerich**



Organisation: KEN SHI KAI Karateschule Schwamendingen www.kenshikai.ch



5.SWISS KARATE OPEN

Memorial “CLAUDE SITTINGER”



Sportanlage Wallisellen, Alte Winterthurstrasse 62
8304 Wallisellen / Zürich

Saturday, 22 February 2014

Categories Kata-Team U16+U18,18+
Categories Cadets Individual U16 higher than green belt
Categories Juniors Individual U18 higher than blue belt
Categories Seniors Individual +18 higher than blue belt
Categories U21 higher than blue belt

Sunday, 23 February 2014

Categories Team-Kata Children U10+12 mixed, U14
Categories Children Individual U10 higher than green belt
Categories Children Individual U12 higher than green belt
Categories Children Individual U14 higher than green belt

Registration only online at : www.sportdata.org

Organizer: KEN SHI KAI Karateschule Schwamendingen www.kenshikai.ch

Contact: Mr. Hakki Güldür E-Mail: president@karateunion.ch www.karateunion.ch

Registration on www.sportdata.org

The registration needs to include following information:

- Online registration of the athletes on www.sportdata.org
- Name of official Coach
- Name of Referee
- Name of official representative (maximal 2 people, e.g. 1 president of the association, 1 technical director)
- Name of photographer & press (maximal 2 people, 1 photographer, 1 press)

Only companions with a valid and official Swiss Karate Open 2014 card (Coach-card, press-card, photographer card) are allowed to enter the hall. All other companions & spectators may only accede the grandstand & must not enter the hall (tatami area). Spare cards will not be distributed on the tournament day.

Registration deadline

Wednesday, 12th of February 2014

Online registration of athletes, Coaches & other official participants on www.sportdata.org.

Registrations after the deadline will not be considered.

Drawing

Sunday, 16th of February 2014, 12 o'clock

Location: Swiss Karate Union, tournament coordination office, 1700 Fribourg

Payment of the registration fee in CHF or Euro

CHF 25.00 Children	20 Euro	Children
CHF 30.00 Cadetts / Junior	25 Euro	Cadets / Junior
CHF 35.00 U21 / Seniors	30 Euro	U21 / Seniors
CHF 50.00 Team-KATA	45 Euro	Team-KATA

The registration fees need to be paid at the team-registration desk (weighing) according to the registrations on Sportdata.org one day before the tournament (Friday, 21th of February 2014) or on the tournament day (Saturday, 22th of February / Sunday, 23th of February 2014).

Refund only with a personal medical certificate!

Regulation

According to the regulations of WKF & Swiss Karate Federation (SKF) with several adjustments (www.karate.ch).

Liability

Insurance is the participant's own responsibility. The organizer, SKU and SKF exclude any form of liability whatsoever. With the registration the participant & the Dojo-director confirm the physical and psychic health of the participant as well as the participation in the tournament without any difficulty as regards health.

Participation

The simultaneous participation in two or more categories within Kata or Kumite is not permitted. The exceptions are mentioned in the categories.

Coach

Only companions with a valid and official Coach-card of the Swiss Karate Open are allowed to enter the hall. All other companions & spectators may only accede the grandstand & must not enter the hall (Tatami area). Each club will get one Coach-card per 5 Competitors (**max. 6 Coaches per club**) (1 Coach per Tatami).

The Coach-cards will be distributed at the team-registration desk (weighing) one day before the tournament (Friday, 21st February) and on the tournament days (Saturday, 22nd February / Sunday, 23rd February). A deposit value of CHF 5.-- or Euro 5.-- will be collected for this card but you will receive this amount back if you return this card at the registration desk.

Online registration of Coaches & other official participants only on www.sportdata.org.

Dresscode: Karate-Gi or sportsdress!

Equipment

White Karate-Gi (an emblem of the club on the left side is permitted). Bandages need to be approved from the national referee committee NSK-SKU. Contact lenses at one's own risk. Eyeglasses are forbidden in all categories!

Obligatory for Kumite:

- Red and blue belt
- Official red and blue fist protection
- Official red and blue foot protection
- Dental protection
- Cup for male participants
- Chest protector for female participants
- Cadetts, Juniors, Seniors: body protection and official red and blue shin guard

Obligatory for Kumite:

- Body protection for all athletes (Cadetts, Juniors, U21 and Seniors)

Permitted for Kumite:

- Children: Shin guard permitted (red, blue and white)

Responsible referee

Tommaso Mini, Jean Luna

The organizer (OK-Swiss Open president) can refer athletes, coach and accompanying persons from the hall, if they do not follow the instructions of the Security Service. When threats and / or acts of violence against referees or athletes reserves the Swiss penal measures

Protest

Protests have to be justified and handed in to the National Referee Committee in written form. At the same time a deposit of CHF 200.- needs to be left. Should the protest be approved, the amount will be refunded.

Penalty Points

Techniques with contact or insufficient control are punished with penalty points (Hansoku –8 points, Chui –3 points). A score of 11 penalty points (category 1) results in a disqualification of all Kumite categories. Report forms document the fights and are under the surveillance of the responsible Tatami referee. Athletes who win twice as a result of Hansoku are disqualified.

Award ceremony

Should a medal winner be prevented to attend the award ceremony he or his coach needs to ask the National Referee Committee for approval. The National Referee Committee decides whether the given reason is adequate. At the award ceremony the competitor should dress a karate-gi or a sportsdress. By non-compliance the position is denied.

Photographer

Photographers need an official authorization from the organizer (for the tatami area). They should not disturb the course of the tournament.

Annex

Guidance online-registration, WKF Kata list, Location plan

Subject to alteration. All information and detailed time schedules on
www.sportdata.org and www.karateunion.ch

KATA

Categories Children (U10, U12, U14)

Start: Sunday 23th of February 2014

Essential is the BIRTHDAY !

Should there be less than 4 athletes in one category, they will automatically be classed in the next higher category of the same age. Is the category already the highest category, then the athletes will automatically be classed in the next lower category.

Each winner is obligated to inform the responsible tournament table immediately after each round.

KATA INDIVIDUAL

Category	Appellation	Minimum degree	Years
U10	Girls	from green belt 6. Kyu	8
	Boys	from green belt 6. Kyu	8
	Girls	from green belt 6. Kyu	9
	Boys	from green belt 6. Kyu	9
U12	Girls	from green belt 6. Kyu	10
	Boys	from green belt 6. Kyu	10
	Girls	from green belt 6. Kyu	11
	Boys	from green belt 6. Kyu	11
U14	Girls	from green belt 6. Kyu	12
	Boys	from green belt 6. Kyu	12
	Girls	from green belt 6. Kyu	13
	Boys	from green belt 6. Kyu	13

Minimum level : green belt

Shobu System, Consolation round with Montreal-System.

Qualifying round and Final with flag-system.

Different Kata in each round.

The number of Kata the athlete needs to present depends on the number of participants in the category. Tokui Kata (different Kata in each round). Each round has a different kata are shown. At least three different kata in the previous round was presented may not be shown. For example, first round Kata 1 and second Round Kata 2 thirth Round Kata 3.
then for 4th round either a circular another Kata or kata 1 or 2 but **3** cannot be shown.

During the consolation round the Tokui Katas can be chosen. For the 3rd place-determination and during the finals the athletes present their Kata one after another. During all other rounds the athletes present their Katas at the same time.

Tokui-Kata according to the WKF list enlarged with:
Gekisai-Dai-Ichi, Gekisai-Dai-Ni, Heian Kata, Pinan Kata. (no Shitei-Kata-rounds).

During the qualifying round the athletes present their Katas at the same time.

During the qualifying round the athletes present a Tokui-Kata at the same time. For the 3. place-determination and during the finals the athletes present their Kata one after another.

The simultaneous participation in two or more categories is not permitted.

KUMITE Categories Children (U10, U12, U14)

Start: Sunday 23th of February 2014

The weight categories will be determined on the basis of the registrations. Therefore, the exact body weight needs to be declared in the registration form on www.sportdata.org.

NEW: Weight tolerance: +/- 3000 gram.

NEW: Weighing at the competition area.

Every child needs to weigh in before the category begins.

Should the weight tolerance differentiate more than +/- 3000 gram, the athlete is disqualified.

KUMITE INDIVIDUAL

Category	Appellation	Minimum degree	Balance	Years
U10	Girls	from green belt 6. Kyu	Light, medium, heavy	8-9
	Boys	from green belt 6. Kyu	Light, medium, heavy	8-9
U12	Girls	from green belt 6. Kyu	Light, medium, heavy	10-11
	Boys	from green belt 6. Kyu	Light, medium, heavy	10-11
U14	Girls	from green belt 6. Kyu	Light, medium, heavy	12-13
	Boys	from green belt 6. Kyu	Light, medium, heavy	12-13

Regulation SKF with following adaptations :

Shobu System, Consolation round with Montreal-System.

Duration of the fight: 1 ½ minutes real.

Head (Jodan): Touch is not permitted (fist and foot techniques).

Belly / Back (Chudan): Light touch of the Karategi is permitted but no contact with the body.

PROTECTION: red and blue fist protection, foot protection, dental protection and cup for male participants obligatory (shin guard permitted)

Face guard is not permitted in this category.

The simultaneous participation in two or more categories is not permitted.

KATA

Category Cadets (U16 higher than green belt) Start: Saturday 22th of February 2014

Essential is the BIRTHDAY !

Should there be less than 4 athletes in one category, they will automatically be classed in the next higher category of the same age. Is the category already the highest category, then the athletes will automatically be classed in the next lower category.

Each winner is obligated to inform the responsible tournament table immediately after each round.

KATA INDIVIDUAL

ATTENTION: CATEGORY CADETS higher than GREEN BELT

category	appellation	Minimum degree	Years
U16 cadetts	Female	from green belt 6. Kyu	14
	Male	from green belt 6. Kyu	14
	Female	from green belt 6. Kyu	15
	Male	from green belt 6. Kyu	15

Shobu System, Consolation round with Montreal-System.

Qualifying round and Final with flag-system.

Different Kata in each round according to the following criteria:

The number of Kata the athlete needs to present depends on the number of participants in the category. Tokui Kata (different Kata in each round). Each round has a different kata are shown. At least three different kata in the previous round was presented may not be shown. For example, first round Kata 1 and second Round Kata 2 thirth Round Kata 3.
then for 4th round either a circular another Kata or kata 1 or 2 but **3** cannot be shown.

During the consolation round the Tokui Katas can be chosen. For the 3rd place-determination and during the finals the athletes present their Kata one after another. During all other rounds the athletes present their Katas at the same time.

Tokui-Kata according to the WKF list enlarged with:
Gekisai-Dai-Ichi, Gekisai-Dai-Ni, Heian Kata, Pinan Kata.

KUMITE

Category Cadets (U16 higher than green belt) Start: Saturday 22th of February 2014

Essential is the BIRTHDAY !

Should there be less than 4 athletes in one category, they will automatically be classed in the next higher category of the same age. Is the category already the highest category, then the athletes will automatically be classed in the next lower category.

Each winner is obligated to inform the responsible tournament table immediately after each round.

KUMITE Individual Cadets U16

Minimum degree green belt(6.Kyu)

Cadets male U16 14-15 -52, -57, -63, -70, +70 Shobu System, Consolation round with Montreal-System Weight tolerance: +/-100 Gramm Duration of the fight: 2 minutes real	Cadets female U16 14-15 -47, -54, +54 Shobu System, Consolation round with Montreal-System Weight tolerance: +/-100 Gramm Duration of the fight: 2 minutes real
--	--

Obligatory for Kumite:

- Red and blue belt
- Official red and blue fist protection
- Official red and blue foot protection
- Dental protection
- Cup for male participants
- Chest protector for female participants
- Cadetts, Juniors, Seniors: body protection and official red and blue shin guard

KATA

Categories Juniors, U21, Seniors (U18, U21, 18+)

Start: Saturday 22th of February 2014

KATA INDIVIDUAL

U18 Juniors and U21 can also participate in the category Seniors.

Category	Appellation	Minimum degree	Years
U16 Cadetts	Female	from brown belt 3. Kyu	14
	Male	from brown belt 3. Kyu	14
	Female	from brown belt 3. Kyu	15
	Male	from brown belt 3. Kyu	15
U18 Juniors	Female	from blue belt 5.Kyu	16
	Male	from blue belt 5.Kyu	16
	Female	from blue belt 5.Kyu	17
	Male	from blue belt 5.Kyu	17
U21	Female	from blue belt 5.Kyu	18-20
	Male	from blue belt 5.Kyu	18-20
18+ Seniors	Female	from blue belt 5.Kyu	Ab 16
	Male	from blue belt 5.Kyu	Ab 16

Shobu System, Consolation round with Montreal-System.

Qualifying round and Final with flag-system.

Different Kata in each round according to the following criteria:

New WKF Rules only Tokui Kata

For the 3rd place-determination and during the semifinals and finals the athletes present their Kata one after another. During all other rounds the athletes present their Kata at the same time.

Tokui-Kata according to the WKF list.

For Cadets in addition: Gekisai-Dai-Ichi, Gekisai-Dai-Ni, Heian Kata, Pinan Kata.

**Categories Juniors, U21, Seniors
(U18, U21, 18+)
Start: Saturday 22th of February 2014**

KUMITE INDIVIDUAL Juniors U18

Minimum level blue belt (5. Kyu)

<p>Male Juniors U18 16-17 -55, -61, -68, -76, +76</p> <p>Shobu System, Consolation round with Montreal-System Weight tolerance: +/-100 Gramm</p> <p>Duration of the fight: 2 minutes real</p>	<p>Female Juniors U18 16-17 -48, -53, -59, +59</p> <p>Shobu System, Consolation round with Montreal-System Weight tolerance: +/-100 Gramm</p> <p>Duration of the fight: 2 minutes real</p>
--	---

KUMITE INDIVIDUAL U21

Minimum level blue belt (5. Kyu)

<p>Male Juniors U18 18-20 -68, -78, +78</p> <p>Shobu System, Consolation round with Montreal-System Weight tolerance: +/-100 Gramm</p> <p>Duration of the fight: 3 minutes real</p>	<p>Female Juniors U18 18-20 -53, -60, +60</p> <p>Shobu System, Consolation round with Montreal-System Weight tolerance: +/-100 Gramm</p> <p>Duration of the fight: 2 minutes real</p>
--	--

KUMITE INDIVIDUAL Seniors 18+

Minimum level: blue belt (5. Kyu)

<p>Male Seniors 18+ -60, -67, -75, -84, +84</p> <p>Shobu System, Consolation round with Montreal-System Weight tolerance: +/-100 Gramm</p> <p>Duration of the fight: 3 minutes real Final and 3rd place-determination: 4 minutes real</p>	<p>Female Seniors 18+ -50, -55, -61, -68, +68</p> <p>Shobu System, Consolation round with Montreal-System Weight tolerance: +/-100 Gramm</p> <p>Duration of the fight: 2 minutes real Final and 3rd place-determination: 3 minutes real</p>
---	---

Categories Kata - Team (U10,U12, U14, U18, 18+)

The BIRTHDAY is essential !

No double start in any Team categories

Each winner is obligated to inform the responsible tournament table immediately after each round.

TEAM-KATA

All athletes in the team must be from the same club. The oldest athlete defines the category of the team.

Category	Appellation	Minimum degree	Years
U10+U12 mixed	Female+Male	from green belt 6. Kyu	8-11
U14	Female	from green belt 6. Kyu	12-13
	Male	from green belt 6. Kyu	12-13
U16 and U18 Cadets & Juniors	Female	from blue belt 5.Kyu	14-17
	Male	from blue belt 5.Kyu	14-17
U21	Female	from blue belt 5.Kyu	18-20
	Male	from blue belt 5.Kyu	18-20
18+ Seniors	Female	from blue belt 5.Kyu	Ab 16
	Male	from blue belt 5.Kyu	Ab 16

U10+U12 and U14 children

Shobu System, Consolation round with Montreal-System.

Qualifying round and Final with flag-system.

The Teams present their Kata one after another.

Tokui-Kata based on the WKF-List enhanced with Heian, Pinan, Gekisai-Dai-Ichi, Gekisai-Dai-Ni. It is not allowed to show each round the same Kata but it is allowed to interval the Kata. For example 1st round Kata can not be shown in 2nd round but in the 3rd round. Repeating a Kata is only allowed for the 3rd place-determination or in the final. The children need minimum 2 Kata for this category.

Final and 3rd place determination

The category will be without Bunkai.

U16+U18 Cadets & Juniors, 18+ Elite

Shobu System, Consolation round with Montreal-System.

Qualifying round and Final with flag-system.

Different Kata in each round according to the following criteria:

The teams are starting single in each round. Free Kata choice, based on the official WKF-Tokui-Kata List. For each round a different Kata must be presented

Final and 3rd place determination

Team Kata-Presentation with following Bunkai (Bunkai, max. 6 minutes).

Regulations

The execution of the categories children U10,U12 and U14 are based on the sport regulation of the Swiss Karate Federation SKF. Categories from U16 up are based on the regulations of the WKF Version 7.1.

Schedule Saturday, 22th of february 2014
Categories
Team-Kata, Cadets U16, Juniors U18, U21 and Seniors 18+

The consolation round and final are immediately after the category.

07:30 Entrance of the athletes **and weight control 07:30-09:30**
07:45 Briefing of the Referees and Coach-Meeting
08:15 Start of tournament
08:30 Kata Individual Juniors / U21 and Seniors Female and Male
11:30 Award ceremony / break **and weight control 11:30-13:00**
12:30 Kumite Individual Juniors
14:30 Kumite Individual U21 **and weight control 14:30-16:00**
16:00 Kumite Individual Seniors
20:30 Award ceremony

Schedule Sunday, 23th of February 2014
Categories
Team-Kata, Children U10,U12,U14 higher than green belt

The consolation round and final are immediately after the category.

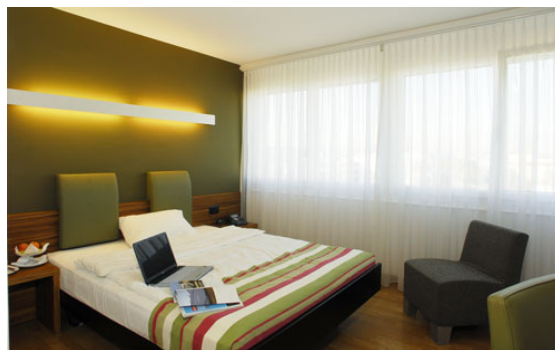
07:30 Entrance of the athletes **and weight control 07:30-09:30**
07:45 Briefing of the Referees and Coach-Meeting
08:00 Start of tournament
08:15 Team Kata and Kata Individual Children (U10/U12/U14)
11:30 Award ceremony / break **and weight control 11:30-13:00**
12:30 Kumite Individual Cadets (green and blue belt)
14:30 Kumite Individual Children (U10/U12/U14)
17:30 Award ceremony

The final schedule will be published on
www.sportdata.org and www.karateunion.ch



HOTEL BELAIR

5 MINUTEN ZU FUSS BIS ZUM SPORHALLE / 5 MINUTE À PIED JUSQU'À LA SALLE DE SPORT



Hotel Belair

Alte Winterthurerstrasse 16
CH-8304 Wallisellen-Zürich
Tel. + 41 44 839 55 55
Fax + 41 44 839 55 65
info@belair-hotel.ch

Restaurant LA CANTINELLA

Alte Winterthurerstrasse 16
CH-8304 Wallisellen-Zürich
Tel. + 41 44 839 55 99
Fax + 41 44 839 55 65
info@lacantinella.ch

Hotel Restaurant MARE & MONTI

Claudia & Biagio Corrado
Klotenerstrasse 39
CH-8303 Bassersdorf
Kanton: Zürich

Telefon: +41 (0)44 836 67 67
Telefax: +41 (0)44 836 73 93

Email www.mare-monti.ch



Hotel Allegra
Hamelirainstrasse 3
CH-8302 Kloten

Tel. +41 (0)44 804 44 44
Fax +41 (0)44 804 41 41

allegra@welcomegroup.ch

Hotel Welcome Inn
Holbergstrasse 1
CH-8302 Kloten

Tel. +41 (0)44 804 75 75
Fax +41 (0)44 804 75 74

welcomeinn@welcomegroup.ch

Hotel Fly away
Marktgasse 19
CH-8302 Kloten

Tel. +41 (0)44 804 44 55
Fax +41 (0)44 804 44 50
flyaway@welcomegroup.ch

Hotel Cuba Libre
Hansueli Wagner
Hauptstrasse 1
8303 Bassersdorf
Telefon: +41 44 836 52 00
Fax: +41 44 836 52 27

Hotel Pöstli
Neue Winterthurerstrasse 12
CH-8303 Baltenswil

Tel. ++41 44 838 91 91
Fax ++41 44 837 00 28
www.hotelpoestli.ch
info@hotelpoestli.ch

City- & Wellnesshotel Sonnentäl
Zürichstrasse 94/96
8600 Dübendorf
8600 Dübendorf
Tel: +41 44 802 12 82
Fax: +41 44 821 41 91
www.zuerich-hotels.ch
sonnental@zuerich-hotels.ch

Stiftung für Jugendherbergen in der Schweiz Youth Hostel

[Schaffhauserstrasse 14, 8006 Zürich](#) 044 360 14 14 youthhostel.ch

[Mutschellenstrasse 114, 8038 Zürich](#) 043 399 78 00 youthhostel.ch
