

**Meet the best of the Balkans,
at the heart of the Balkans**
All age groups competition



First Official Bulletin
English

March 16
Bulgaria
Sofia

INTERNATIONAL KARATE
NIKON OPEN 2013

Contact: kk_nikon@yahoo.com

Meet the best of the Balkans, at the heart of the Balkans

All age groups competition



Welcoming

**Sofia
Bulgaria
March 16**

Dear Friends,

In the name of Karate Club Nikon and the Bulgarian National Karate Federation, I would like to invite you to the “1st International Nikon Karate Open”, which is being hosted on 16th March 2013 in Sofia, Bulgaria.

Our Karate Club Nikon Sofia looks on a long and successful history in Bulgaria and the Balkan Area- one of the most successful regions at European and World Karate Championship level throughout the last years.

It is our long-term goal to welcome Karatekas from all over the world and let them compete with the best fighters from the Balkans in an international high-scale competition.

Beautifully surrounded by the Vitosha Mountains, our vibrant capital Sofia is the ideal location for that. At the heart of the Balkan Peninsula, being a center of historic and cultural crossroads, Sofia is a gateway not only to the treasures and beauty of Bulgaria but also to its many colorful neighboring countries and whole Southeastern Europe. It's a perfect place to combine sports and leisure.

We hope you will enjoy your stay in Sofia and wish you good luck at our competition.

Best Regards,

Nikolay Tsanev

Organizer



TŌKAIDO



General Information

Location

Sports Hall “Siconco” – Lyulin 701st street, Sofia, Bulgaria

Time

Bulgaria is in the Eastern European Time Zone, GMT + 2 hours.

Currency

The Bulgarian Currency is the Leva. 1 Euro corresponds to 1,95 Leva; 1 Dollar to 1,49 Leva.

Communication

To call Bulgaria from abroad, dial the international code 00 followed by 359 for Bulgaria, then the number without the first 0.

To call from Bulgaria to another country, dial the international code 00, then the code of the country and then the number without the first 0.

Emergency Numbers

Identical for police, ambulance and fire brigade: **112**

→Nearest Hospital: “MBAL Lyulin”,
Address:
Boulevard “Petar Dertliev” 81
District Lyulin 6,
Sofia
Phone: +359-(0)-28297400

Contact

For any Information, please contact Tervel Zwjatkow:
e-mail: nikon.open@gmail.com, or by phone: +49-(0)-17696302035

→To contact the **Bulgarian National Federation Karate (BNFK)**:

Boulevard Vassil Levsky 75
Sofia 1040, Bulgaria
Phone: +359 2 9879413
Mobile: +359 87 8879413
E-Mail: office@karatebg.org
Web: www.karatebg.org/

Visa Requirements

Visitors from the following countries do not need a visa to enter Bulgaria:

Andorra, Australia, Austria, Belgium, Brazil, Brunei, Canada, Chile, Costa Rica, Croatia, Cyprus, Czech Republic, Denmark, El Salvador, Estonia, Finland, France, Germany, Greece, Guatemala, Honduras, Hungary, Iceland, Ireland, Israel, Italy, Japan, Latvia, Liechtenstein, Malta, Lithuania, Luxembourg, Malaysia, Mexico, Monaco, Netherlands, New Zealand, Nicaragua, Norway, Panama, Paraguay, Poland, Portugal, Republic of Korea, Romania, San Marino, Singapore, Slovak Republic, Slovenia, Spain, Sweden, Switzerland, UK (British Citizen Passport Holders and British Nationals /Overseas/ only), USA, Uruguay, the Vatican, Venezuela, SAR – China (Hong Kong, Macao)

All holders of passports from countries not mentioned in the list above need visas to enter Bulgaria.

For any specific information please check the English webpage of the Bulgarian Ministry of Foreign Affairs:

<http://www.mfa.government.bg/en/pages/109/index.html>

Registration of Delegations

All competitors, referees, coaches and officials must register via e-mail to nikon.open@gmail.com until **Monday 11th of March 2013!**

Clubs/teams/federations are responsible for the quality of the entered registration data.

The official registration session will take place on Saturday, March 16th, from 8am to 12am-both at the sports hall.

Categories

The below given age is referring to the date of the tournament: 16th March 2013.

Makiwara 6 years
7 years

Kata

Kata Individual, Male & Female	Kata Team, Male & Female
6,7 years	6-9 years
8,9 years	10-13 years
10,11 years	14 and over
12, 13 years	
14, 15 years	
16+	

Kumite

Age	Male	Female
8,9	-28/ -35/ +35/ Team	-30/ +30/ Team
10,11	-35/ -40/ +40/ Team	-40/ +40/ Team
12,13	-40/ -45/ +45/ Team	-45/ +45/ Team
Cadets (14,15)	-55/ -65/ +65/ Open/ Team	-50/ +50/ Open/ Team
Juniors (16,17)	-60/ -70/ +70/ Open/ Team	-55/ +55/ Open/ Team
Seniors (18 +)	-68/ -78/ +78/ Open/ Team (3+1)	-60/ +60/ Open/ Team (3+1)

Competition Rules

For all categories the official WKF rules are applied.

→In case of less than five competitors in one category, the system will change to “Round Robin”.

→In case of less than three competitors in one category, the category will be deleted.

Entry Fee

Individual:

Team:

Children, 6-13 years

5 €

Children, 6-13 years

15 €

Cadets, Juniors, Seniors

10 €

Cadets, Juniors, Seniors

25 €

Multiple entries are possible. **Payment at the official registration session!**

Prizes

1. to 3. Place will receive medals and a diploma in all categories.

Special Open Category Reward

The Winners of the Senior male and female Open category will receive the brand new “Kumite Master Pro” (WKF approved) Kimono from our partner Tokaido!



Referees

Referees and judges at the competition are delegated by the Bulgarian National Federation Karate (BNFK).

All foreign referees with National or EKF/ WKF license are highly welcome. A compensation of 30 Euros will be paid to all foreign referees with national license or higher.

Accommodation

Our partner “Hostel Lavele” will provide a limited number of beds and rooms for a special tournament rate.

It is probably the most centrally located Budget Hotel in whole Sofia, only a two minute walk from metro station “Serdika” on the red **Line 1**, only five stops away from the Sports Hall station “Lyulin”.

It offers six different room categories, all including breakfast:

Rooms		Dormitories	
2 Single Rooms	16 €per room	1 Dorm with 8 Beds	10 €per bed
7 Twin Rooms	24 €per room	1 Dorm with 4 Beds	11 €per bed
1 Triple Rooms	30 €per room		
1 Apartment- 4 beds	36 €per room		

Due to the limited number of rooms, we recommend you to make your reservation as early as possible.

Hostel Lavele is also offering a transfer service from & to Sofia Airport:

	One way	Both ways
Car (1 to 3 people)	15 €	25 €
Van (4 to 8 people)	35 €	65 €

→ All reservations to: nikon.open@gmail.com

For other accommodation in Sofia we recommend you to check www.trivago.com for hotels or www.hostelbookers.com for hostels.

By Plane

Sofia International Airport offers direct flights to nearly all major cities in Europe and several in the Middle East:

→ **Low-Cost Airlines** – from Terminal 1 (Wizz Air, Easyjet):

Barcelona, Brussels-Charlerois, Eindhoven, Forli, Frankfurt-Hahn, London (-Gatwick,-Luton,-Stansted), Madrid, Manchester, Milan-Bergamo, Paris-Beauvais, Rome, Valencia, Venice-Treviso, Vienna

→ Regular Airlines – from Terminal 2:

Amsterdam, Athens, Berlin, Brussels, Bucharest, Doha, Frankfurt, Istanbul, Larnaca, London-Heathrow, Madrid, Malta, Milan, Moscow, Munich, Palma de Mallorca, Paphos, Paris, Prague, Rome, St. Petersburg, Tel Aviv, Vienna, Warsaw, Zurich

For price details and booking we recommend you to check www.skyscanner.com

By Train or Bus

Long distance and Night Trains connect Sofia with all major cities in the Balkan Area, and additionally with Prague, Vienna, Budapest, Kiev, Moscow and Istanbul.

For timetables check www.bahn.com

Sofia has regular Bus connections to every part of Europe.

→ The Central Railway and Central Bus Station are located directly next to each other.

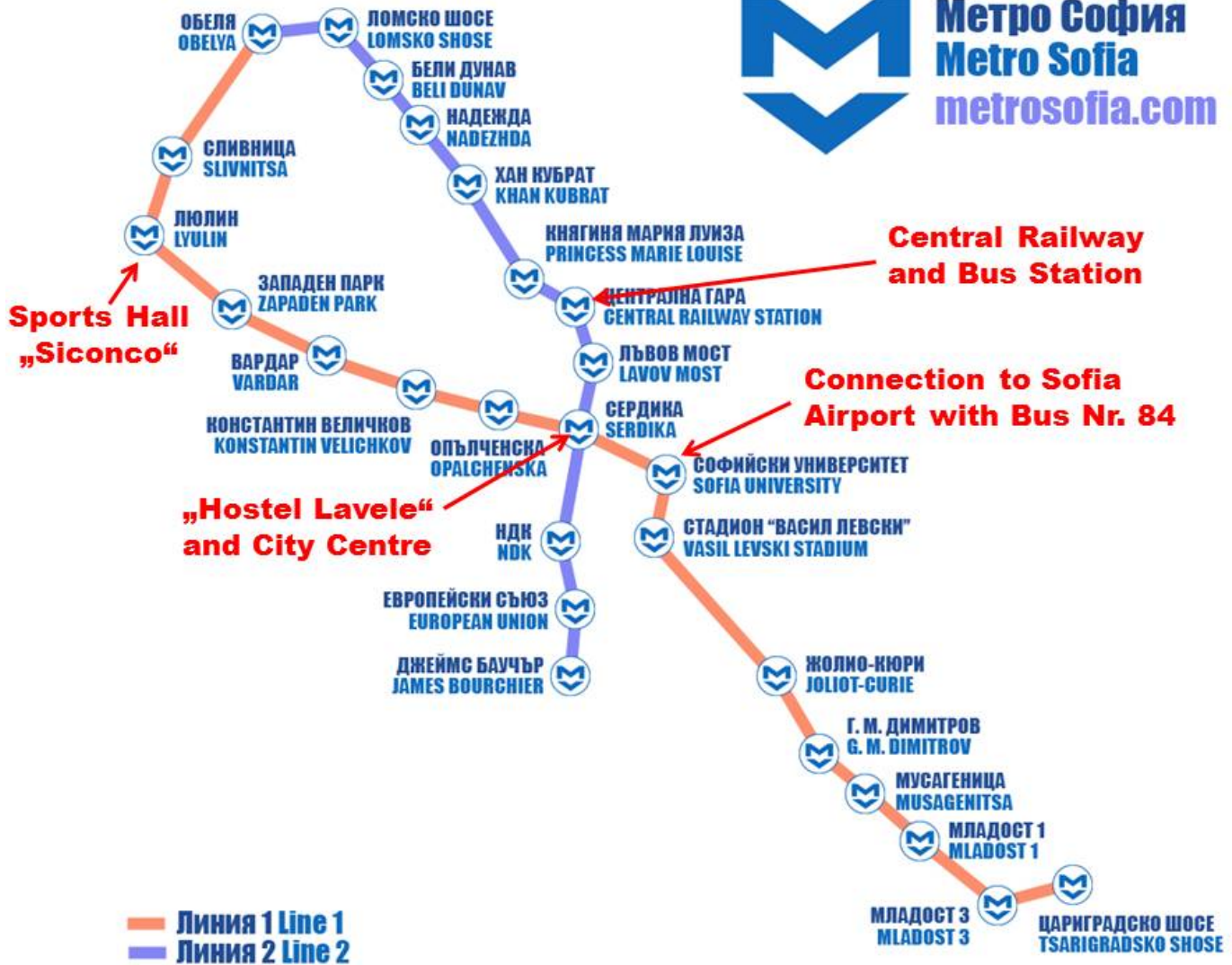
Public Transport (Please refer to the maps on the next page)

Sofia's Metro system consists of two lines, the red **Line 1** and the blue **Line 2** which cross each other at the City Centre station "Serdika".

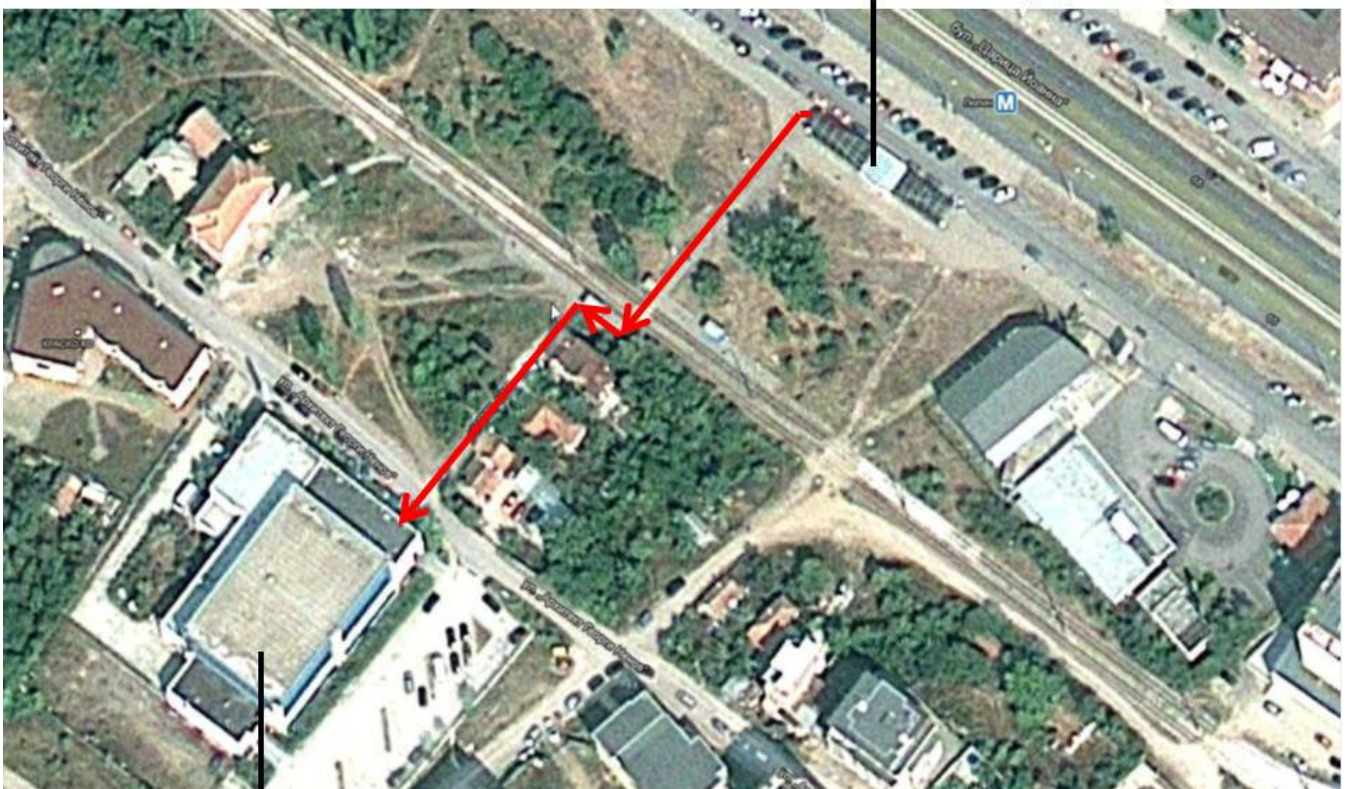
- From the Airport take Bus Nr. 84 (stops at both Terminals) to the last stop "Sofia University", where you have connection to Metro **Line 1**.
The bus ride takes about 35 minutes and one ticket costs 1 Leva. Tickets can be bought from the driver.
A taxi to the City Centre costs about 20 Leva and takes half the time.
- From the Central Railway or Bus Station, take the Metro **Line 2** at "Central Railway Station", direction "James Bourchier" to get to the City Centre.
- To get to the Sports Hall "Siconco", from the Centre take **Line 1** until "Lyulin". The Sports Hall is a five minute walk away.



Метро София
Metro Sofia
metrosofia.com



Metro Station „Lyulin“, Line 1



Sports Hall „Siconco“

Schedule

The competition will start 9:00 am. A detailed schedule will be released as soon as possible.

Updates and Questions

For all updates please check www.sportdata.org

For any question, write to nikon.open@gmail.com

- SEE YOU IN SOFIA -

